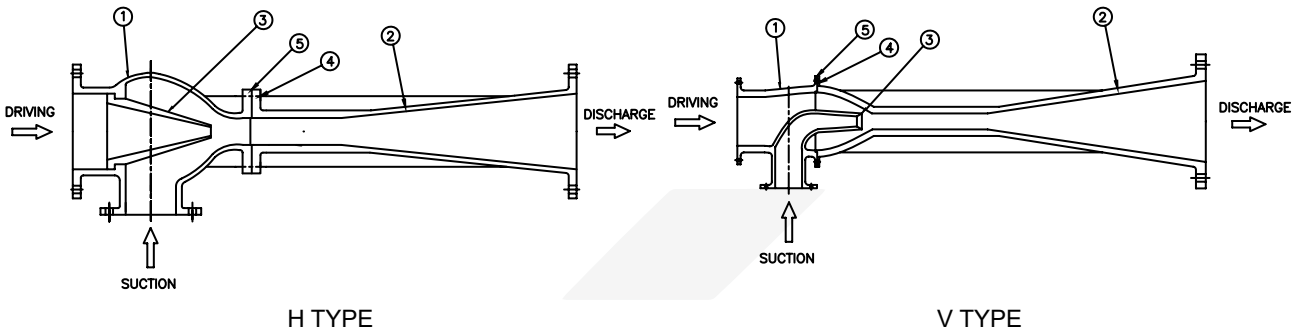


# EDUCTOR



H TYPE

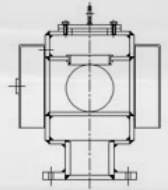
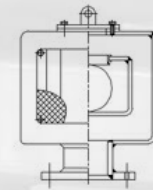
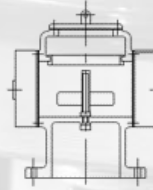
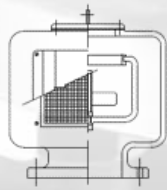
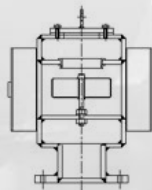
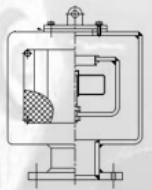
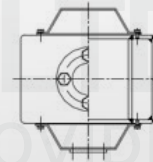
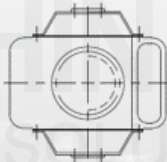
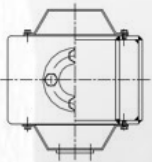
V TYPE

## Specification

No.	PARTS	MATERIAL
1	BODY	CAST IRON / CAST STEEL / STAINLESS STEEL / BRONZE
2	DIFFUSER	CAST IRON / CAST STEEL / STAINLESS STEEL / BRONZE
3	NOZZLE	STAINLESS STEEL
4	BOLT / NUT	STEEL
5	GASKET	NON ASBESTOS

TYPE	"H" / "V"
SIZE	40A X 50A X 65A ~ 350A X 400A X 450A
APPLICABLE	JIS / ANSI
APPLICATION	TANK MIXER / SAND&MUD PUMP / CARGO / BALLAST

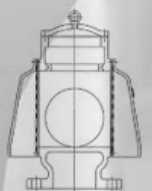
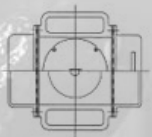
# Air Vent Head



WEDLING (DISC FLOAT)

CASTING (DISC FLOAT)

WEDLING (BALL FLOAT)

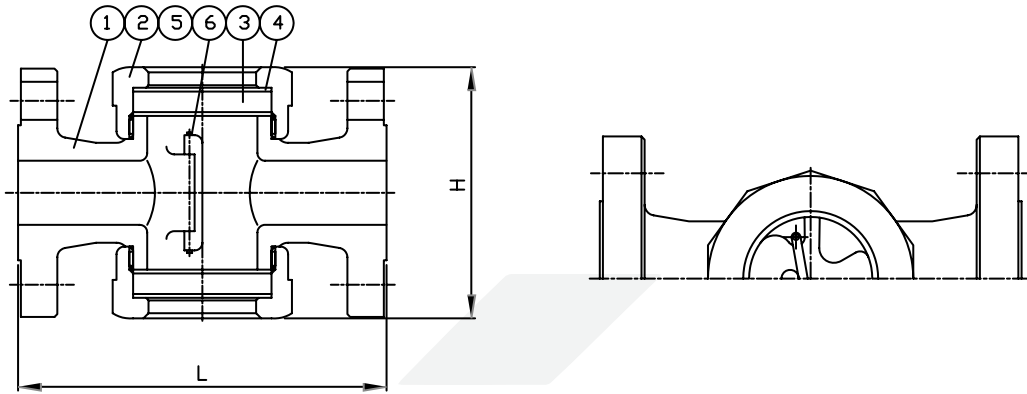


CASTING (BALL FLOAT)

## Specification

TYPE	WEDLING	CASTING
SIZE	2" up to 26" (DN50 ~ DN650)	2" up to 18" (DN50 ~ DN450)
APPLICABLE	JIS / ANSI / DIN	JIS / ANSI / DIN
END CONN.	FLANGED	FLANGED
FLOAT TYPE	DISC / BALL / HALF BALL	DISC / BALL
BODY MAT'L	CARBON STEEL	CAST IRON
	STAINLESS STEEL	CAST STEEL
	ALUMINIUM	STAINLESS STEEL
DISC/BALL MAT'L	STAINLESS STEEL / DUPLEX	
STD. WIRE MESH	30 MESH / 5 MESH / 6 MESH	
STD. COATING	HOT DIP GALV'D	
FEATURES	POSSIBILITY TO INSPECT THE INTERNALS AND EXCHANGE PARTS SELF-DRAINING	

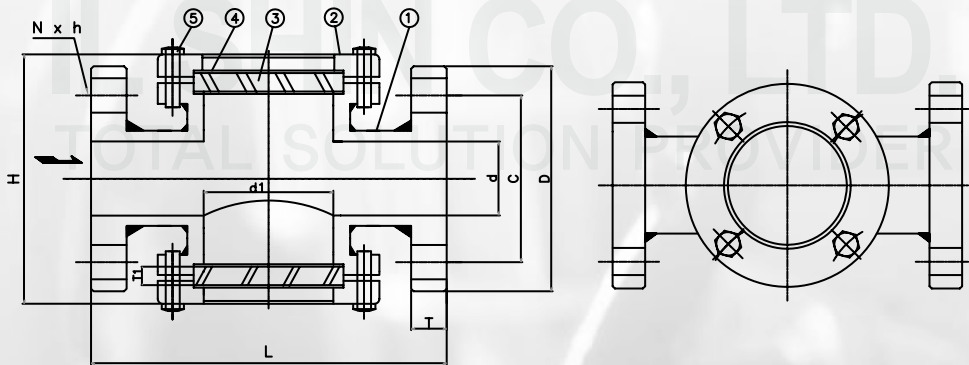
# Sight Glass (Casting Type)



No.	PARTS	MATERIAL	Dimension (Unit:mm)		
			Size	L	H
1	BODY	CAST IRON / CAST STEEL	15A	150	95
2	BONNET	CAST IRON / CAST STEEL	20A	150	100
3	GLASS	GLASS	25A	170	125
4	GASKET	NON ASBESTOS	32A	200	135
5	FLAPPER	STAINLESS STEEL	40A	200	140
6	PIN	STAINLESS STEEL	50A	220	155
			65	260	175
			80A	260	175
			100A	300	210

\* JIS / ANSI / DIN IS APPLICABLE

# Sight Glass (Welding Type)



No.	PARTS	MATERIAL
1	BODY	CARBON STEEL / STAINLESS STEEL
2	BONNET	CARBON STEEL / STAINLESS STEEL
3	GLASS	ON REQUEST
4	GASKET	NON ASBESTOS
5	COVER BOLT	STEEL

\* JIS / ANSI / DIN IS APPLICABLE

Size	d	L	H	FLANGE 5K				FLANGE 10K				FLANGE 150LBS				d1	GLASS (T1)
				D	C	T	N-h	D	C	T	N-h	D	C	T	N-h		
				100A	102.3	210	240	200	165	16	8-19	210	175	18	8-19		
125A	126.6	245	290	235	200	16	8-19	250	210	20	8-23	254	215.9	23.9	8-22.4	89.1	10
150A	151	310	330	265	230	18	8-19	280	240	22	8-23	279	241.3	25.4	8-22.4	114.3	12
200A	199.9	380	380	320	280	20	8-23	330	290	22	12-23	343	298.5	28.5	8-22.4	139.8	12
250A	248.8	460	460	385	345	22	12-23	400	355	24	12-25	406	362	30.3	12-25.4	165.2	12
300A	297.9	540	540	430	390	22	12-23	445	400	24	16-25	483	431.8	31.8	12-25.4	216.3	15

# Pipe & Fitting & Flange

DESCRIPTION	PIPE	FITTING	FLANGE	
SIZE	O.D ½" up to 150" (DN15 ~ DN3750)	2" up to 24"(SMLS) / 26" up to 120"(WELDED) 1/8" up to 4" (FORGED)	-	
TYPE	WELDED	ELBOW	JIS & KS FLANGE	CLASS 5K UP TO 40K , 210/280/350K
	SEAMLESS	REDUCER	ASME / ANSI FLANGE	CLASS 150# UP TO 2500#
	STRUCTURAL	TEE	DIN FLANGE	6BAR UP TO 40BAR
	TUBE	CAP	RING JOINT FLANGE	CLASS 150# UP TO 2500#
	-	WELDOLET	ORIFICE FLANGE	CLASS 300# UP TO 2500#
	-	BEND	LONG WELDING NECK FLANGE	CLASS 150# UP TO 2500#
	-	THREDOLET	ASME B16.47 SR. B FLANGE (API 605)	CLASS 75# UP TO 900#
	-	THREADED FITTINGS	ASME B16.47 SR. A FLANGE (MSS SP44)	CLASS 150# UP TO 900#
	-	NIPPLE	AWWA FLANGE	
-	INSERT	ASME B16.48 (API 590)	CLASS 150# UP TO 2500#	
APPLICABLE	JIS / ASTM / API / ASME / BS / ETC.	JIS / ASTM / API / ASME / ETC.	JIS / ANSI / DIN / MSS SP44 / API / BS	
MATERIAL	CARBON STEEL	CARBON STEEL	CARBON STEEL	
	STAINLESS STEEL	STAINLESS STEEL	STAINLESS STEEL	
	-	-	ALLOY STEEL	
	-	-	DUPLEX / SUPER DUPLEX	

## 1. PIPE



## 2. FITTING



## 3. FLANGE

